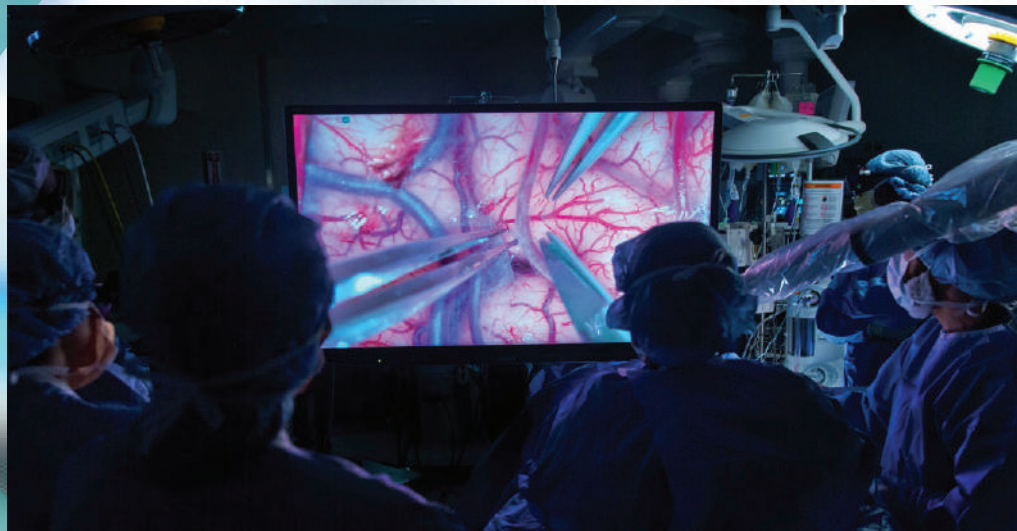




MEDICAL GRADE MONITOR



HISENSE MEDICAL MEDICAL GRADE MONITOR

Diagnostic Display :

Application Scenario :

CR/DR X-Ray MRI PET/CT DSA/RF
 Digital mammary gland 3D Imaging
 Image Fusion Nuclear Medicine.



FEATURES :

- Conform to DICOM Part14 standard.
- High Definition.
- Wide Viewing Angle.
- High Grayscale and Color Processing.
- Intelligent Gamma Calibration technology are benefit to accuracy display images with grayscale and color simultaneously.
- Front Sensor Verification and DICOM Calibration.
- Rapid Brightness Stability Technology.
- Eye-protection and Energy-saving.



MODEL		HMD2C21A	HMD2G21S	HMD3G21S	HMD3C21S	HMD4C27	HMD4C27S	HMD6C30D
Color/Monochrome		Color	Monochrome	Monochrome	Color	Color	Monochrome	Color
Panel	Resolution	1200x1600	1200x1600	1536x2048	1536x2048	2560x1440	2048x2560	3280x2048
	Backlight source	LED	LED	LED	LED	LED	LED	LED
	Dimension(inch)	21.3	21.3	21.3	21.3	27	21.3	30
	Pixel Pitch(mm)	0.270x0.270	0.270x0.270	0.2115x0.2115	0.2115x0.2115	0.233x0.233	0.165x0.165	0.197x0.197
	Brightness(cd/m2)	1000	1900	1900	2000	550	3000	3000
	Contrast ratio	1800:1	1800:1	1800:1	1800:1	1000:1	2000:1	1300
	Viewing angle	178°,178°	178°,178°	178°,178°	178°,178°	178°,178°	178°,178°	178°,178°
	Response time (ms)	TR8+TF8	TR10+TF9	TR10+TF9	TR15+TR13	TR8+TF8	TR11+TF14	TR13+TF15
Grey/Color bits	8bit	8bit	8bit	10bit	8bit	10bit	10bit	
Sensor	Backlight sensor	✓	✓	✓	✓	✓	✓	✓
	Front sensor	-	✓	✓	✓	✓	✓	✓
	Ambient light	✓	✓	✓	✓	✓	✓	✓
Other	Input Interface	DVIDx1, DPx1	DVIDx1, DPx1	DVIDx1, DPx1	DVIDx1, DPx1	DVI-Dx2, DPx2, HDMIx1	DVI-Dx1, DPx1	DVI-Dx2, DPx2, HDMIX1

HISENSE MEDICAL MEDICAL GRADE MONITOR

Surgery/OR Display :

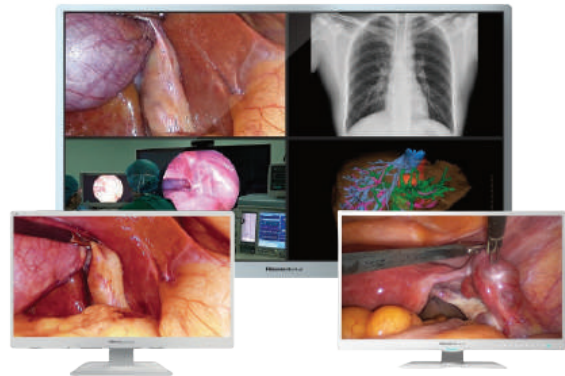
Application Scenario :

Surgery monitor can be widely used for variety of medical scenes such as surgery and minimally invasive surgery. Operating Room(OR) display is suitable for DOR, DSA, , training and video broadcast.



FEATURES :

- ➔ Perfect Image Quality.
- ➔ Professional AR coating.
- ➔ Opting Bonding.
- ➔ Quiet and environment friendly design.
- ➔ The best window-split technique.
- ➔ Excellent industrial design, full consideration of space compatibility.
- ➔ Abudant I/O design to make your field of vision in OR more focused.
- ➔ Dual power supply design for safe operation.



MODEL		HME8C27	HME8C32E	HME8C32U	HME8C55S	HME8C55E	HME8C55U
Color/Monochrome		Color	Color	Color	Color	Color	Color
Panel	Resolution	3840 x 2160	3840 x 2160	3840 x 2160	3840 x 2160	3840 x 2160	3840 x 2160
	Backlight source	LED	LED	MINI LED	LED	LED	MINI LED
	Dimension(inch)	27	32	32	55	55	55
	Brightness(cd/m2)	640(min) 800(typ)	640(min) 850(typ)	700(min) 2000(peaking)	600(min) 1000(peaking)	600(min) 1000(peaking)	700(min) 2000(peaking)
	Contrast ratio (typicaly)	700:1(min) 1000:1(typ)	1000:1(min) 1500:1(typ)	200000:1	4000:1	4000:1	200000:1
	Viewing angle	178°,178°	178°,178°	178°,178°	178°,178°	178°,178°	178°,178°
	Response time (ms)	16(TR+TF)	20(TR+TF)	14(G+G)	6(G+G)	6(G+G)	8(G+G)
Image Signal	Input	HDMI2.0x1 DP1.4x1 12G-SDIx1/4x 3G-SDI Single-link DVIx1 3G/HD-SDIX1	HDMI2.0x1 DP1.4x1 12G-SDIx1/4x 3G-SDI Single-link DVIx1 3G/HD-SDIX1	HDMI2.0x1 DP1.4x1 12G-SDIx1/4x 3G-SDI Single-link DVIx1 3G/HD-SDIX1	DVIx4/HDMIx1 /DPx1/VGAX1 /SOGx2/3G-SDI /RS485	HDMI/DP/ 3G-SDIX4(4k)/ 3G(HD)-S DI/DVIx2/CGA /RS485	HDMI2.0x1 DP1.4x1 12G-SDIx1/4x 3G-SDI Single-link DVIx1 3G/HD-SDIX1
	Output	HDMI2.0x1 12G-SDIx1/4 x3G-SDI 3G/HD-SDIX1	HDMI2.0x1 12G-SDIx1/4 x3G-SDI 3G/HD-SDIX1	HDMI2.0x1 12G-SDIx1/4 x3G-SDI 3G/HD-SDIX1	3G-SDIx1/ HDMIx1	3G-SDIx5/ HDMIx1	HDMI2.0x1 12G-SDIx1/4 x3G-SDI 3G/HD-SDIx11
	Power	Medical Power adapter (24 VDC)	Medical Power adapter (24 VDC)	AC100VAC240V 50/60Hz	AC100VAC240V 50/60Hz	AC100V AC240V 50/60Hz	AC100VAC240V 50/60Hz

LG MEDICAL GRADE MONITOR

Diagnostic Display :

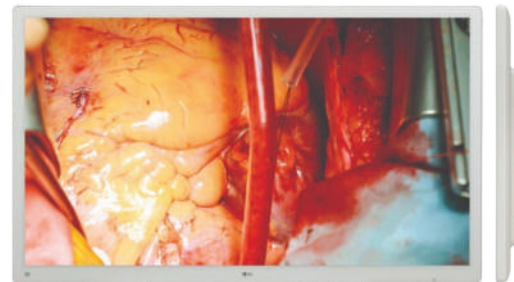
Surgical Display :

We would like to introduce ourselves as the distributor of LG medical grade monitors.

FEATURES :

Superior Picture Quality for Fine Surgery

- ➔ Long lasting Eye Comfort.
 - Flicker safe
- ➔ Designed for use in the Operating Room.
 - Anti-reflection
 - Anti-fingerprint
- ➔ Optimized for Surgical Environments.
 - Mirror Mode
 - Rotation Mode

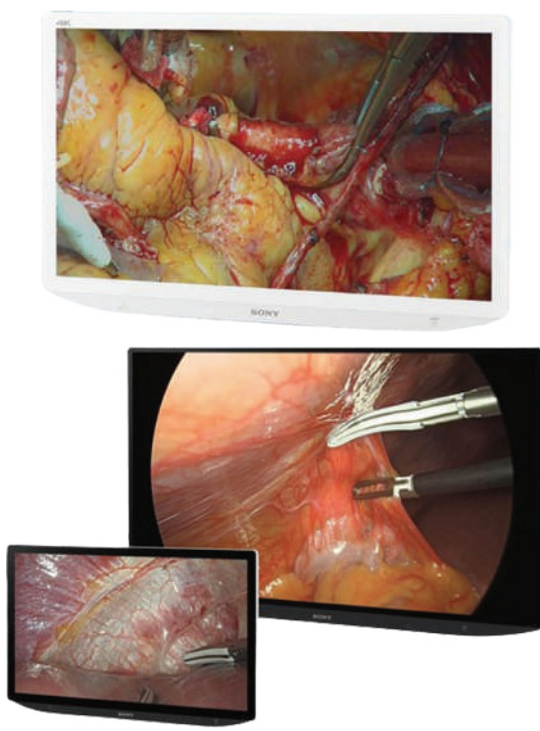


MODEL	19HK312C-B (Diagnostic Monitor)	27HK510S	27HQ710S	MODEL 2	32HL710S	32HL714S	55MH5K
Size	19"	27"	27"	Size	32"	32"	55"
Resolution	1280 X 1024	Full HD (1920 x 1080)	4K (3840 x 2160)	Resolution	8MP (3840 x 2160)	4K (3840 x 2160)	4K (3840 x 2160)
Aspect Ratio	5:4	16:9	16:9	Aspect Ratio	16:9	16:9	16:9
Viewing Angle (CR>10)	178°, 178°	178° (Right/Left) 178° (Up/Down)	178° (Right/Left) 178° (Up/Down)	Viewing Angle (CR>10)	178° (Right/Left) 178° (Up/Down)	178° (Right/Left) 178° (Up/Down)	178° (Right/Left) 178° (Up/Down)
Input Terminals	HDMI x 1 (1.4) Display Port x 1 (1.2), Sub x 1 D-DVI-D x 1, USB 3.0 1 up 2down	HDMI x 1 S-Video x 1 Composite x 1 3G-SDI x 1 DVI-I x 1 D-Sub x 1 (DUSB to DVI-I Gender cable) Component x 1 (DSUB) to DVI-I Gender Cable)	HDMI 2.0 x 1 Display Port x 1 DVI x 1, 3G--SDI x 1	Input Terminals	HDMI x 1, Display Port x 1, DVI x 1, 3G-SDI x 1	HDMI x 1 Display Port x 1, DVI x 1 12G-SDI x 1	12G-SDI, DVI Display Port, HDMI,USB Downstream Port
Output Terminals	-	3G-SDI x1, DVI- D x1	Display Port x 1, DVI x 1, 3G-SDI x 1	Output Terminals	Display Port x 1 DVI x 1, 3G-SDI x 1	Display Port x 1, DVI x 1, 12G-SDI x 1	12G-SSDI x 4, DP x 1, DVI-D x1
Application	Clinical Review Application: Easily multi-task while clinical reviewing from different clinical review application such as department of radiology and exchanges and study information.	Digital OR Endoscopy Laparoscopy Cardiovascular Surgery OT Light.	Digital OR Endoscopy Laparoscopy Cardiovascular Surgery OT Light.	Application.	Digital OR Endoscopy Laparoscopy Neuro Spine Surgery OT Light	Digital OR Endoscopy Laparoscopy Neuro Spine Surgery OT Light	Digital OR Light Neuro Spine Ortho Surgery Laparoscopy

SONY MEDICAL GRADE MONITOR

We would like to introduce ourselves as the distributor of Sony medical grade monitors.

- FEATURES :**
- ➔ High Picture Quality.
 - Full HD Resolution
 - 4k Resolution
 - ➔ Compact and Stylish Design.
 - Narrow Bezel
 - VESA Mounting
 - Ergonomic Design
 - ➔ Easy to Install and Us.
 - 4K 3D/2D available in 55-inch and 32-inch LCD monitor



MODEL	LMD2110MD	LMD2435MD	LMD2735MD	LMDX2705MD	LMDX3200MD	LMDXH320MT	LMDXH550MT
Size	21"	24"	27"	32"	32"	55"	55"
Resolution	Full HD (1920 x 1080)	Full HD (1920 x 1080)	Full HD (1920 x 1080)	4K (3840 x 2160)	4K (3840 x 2160)	4K (3840 x 2160)	4K (3840 x 2160)
Aspect Ratio	16:9	16:9	16:9	16:9	16:9	16:9	16:9
Viewing Angle (Panel Specification)	170°/160° (typical) (horizontal/ vertical contrast >10:1)	89°/89°/89°/89° (typical) (up / down / left /right contrast >10:1)	89°/89°/89°/89° (typical) (up / down / left /right contrast >10:1)	89°/89°/89°/89° (typical) (up / down / left /right contrast >10:1)	89°/89°/89°/89° (typical) (up / down / left /right contrast >10:1)	89°/89°/89°/89° (typical) (up / down / left /right contrast >10:1)	89°/89°/89°/89° (typical) (up / down / left /right contrast >10:1)
Input Terminals	Composite, Y / C, RGB, Component, HDMI	Composite input Y / C input,RGB Component input, DVI-D input, SDI input, HD15 input, External Sync input, Serial Remote, DC input	Composite input Y / C input,RGB Component input, DVI-D input, SDI input, HD15 input, External Sync input, Serial Remote, DC input	HDMI input, DVI-D input, SDI input, Display Port, Serial Remote, Remote, AC input, DC input	HDMI input, DVI-D input, SDI input, Display Port, Serial Remote, Remote, AC input, DC input	HDMI input, DVI-D input, SDI input, Display Port, Serial Remote, Remote, AC input, DC input	HDMI input, DVI-D input, SDI input, Display Port, Serial Remote, Remote, AC input, DC input
Output Terminals	Composite, Y / C, RGB Component, External sync, Audio	DVI-D Output, DC 5 V Output	DVI-D Output, DC 5 V Output	DVI-D output, SDI output, Display port, DC 5 V output, DC12 V output	SDI output, Clone output, DC 5 V output, DC 12 V output	SDI output, Clone output, DC 5 V output, DC 12 V output	SDI output, Clone output, DC 5 V output, DC 12 V output
Application	-	Endoscopy Laparoscopy Arthroscopy Neruo Spine Surgery Digital OR OT Light	Digital OR Endoscopy Laparoscopy Cardiovascular Surgery OT Light	Digital OR Endoscopy Laparoscopy Cardiovascular Surgery OT Light	Digital OR Endoscopy Laparoscopy Neuro Spine Surgery OT Light	Digital OR Endoscopy Laparoscopy Neuro Spine Surgery OT Light	Digital OR Endoscopy Laparoscopy Neuro Spine Surgery OT Light